

Communities First

Fairyland

DRAFT
COPY

The Way Forward



Part One: Introduction	3
Fairyland A Neath Community	4
Part Two: Fairyland Profile	5
Fairyland Partnership	6
Defining Characteristics	7
Information Gathering	8
Statistical Information	10
Part Three: Fairyland Vision	15
Vision	16
Part Four: Fairyland Planning For The Future	17
Environment	18
Jobs & Business	22
Health & Well Being	25
Active Community	30
Education & Training	33
Crime & Community Safety	38
Contact Details	41

Part One

Introduction

Fairyland is a compact batch of 139 properties located to the north of Neath on the hillside below the Gnoll Country Park. Two sides of the estate flow onto open grassland and there are sweeping views across the Neath valley. This view encompasses all the focal landmarks of the town; Saint David's clock tower, the river Neath and the Gnoll rugby ground all defined against the backdrop of Drumma mountain and rolling hills.

Fairyland was built in 1973 by the Local Authority in response to an increased demand for housing. The design of the estate was thought innovative in the 70s but it is now considered to have design flaws. In stark contrast to the local countryside concrete retaining walls, concrete steps and concrete car parks dominate the estate. The estate consists of several rows of terraced houses and four blocks of flats with the majority of these being occupied by council tenants. The design of the estate makes it difficult to identify which are the main entrances to the properties. Poor boundary demarcation adds to the sense of disorientation and anonymity on entering the estate.

Much of the day to day living on the estate revolves around family life. A resilient core of residents has lived on there since it was built and a close and supportive network of family and friends has developed. Several families now have three generations living in Fairyland with one family able to boast four generations. Fairyland is the home to many young children with the estate having a high proportion of single parents.

The reputation of Fairyland has declined over the years. As a result of the estate's unpopularity properties became more readily available. These empty properties were then often used to house tenants with complex needs and issues and this was the cause of divisions within the community. More recently an increase in demand for Local Authority housing has meant that there is less turnover of Fairyland properties and this should result in a less transient community.

Social, economic and environmental factors have impacted on the reputation of the estate. There are low levels of employment, high levels of long-term sickness and disability and a large proportion of the population are young people. These factors coupled with the vandalism, drug abuse, intimidation and fear for personal safety reinforce the negative image of Fairyland.

Fairyland is a small community with a big reputation and now residents are challenging this. The Fairyland Communities First Partnership has identified the underlying causes of the issues and is ready to work towards long-term solutions.

Part Two

Fairyland Profile

The Fairyland Action Plan has been produced as a result of the Welsh Assembly Government identifying Fairyland as a Communities First Sub Ward. The Plan will be used as a tool to make the Fairyland vision for the future a reality. This Action Plan has been developed through the following process.

Bringing together different kinds of expert knowledge

Local Knowledge: Residents have contributed first hand experiences of life in Fairyland illustrating the real needs and issues that affect their day-to-day living. All of the actions and solutions proposed have evolved from their astute and pragmatic understanding of their community

Professional Knowledge: A variety of statutory agencies including the Police, Local Authority, Local Health Board as well and the Elected Members have all contributed to provide realistic solutions for achieving change.

Voluntary Sector Knowledge: Neath Port Talbot Council For Voluntary Services have been actively involved in promoting the experience and support of the voluntary sector. Key organisations include Groundwork, WGCADA and Homestart.

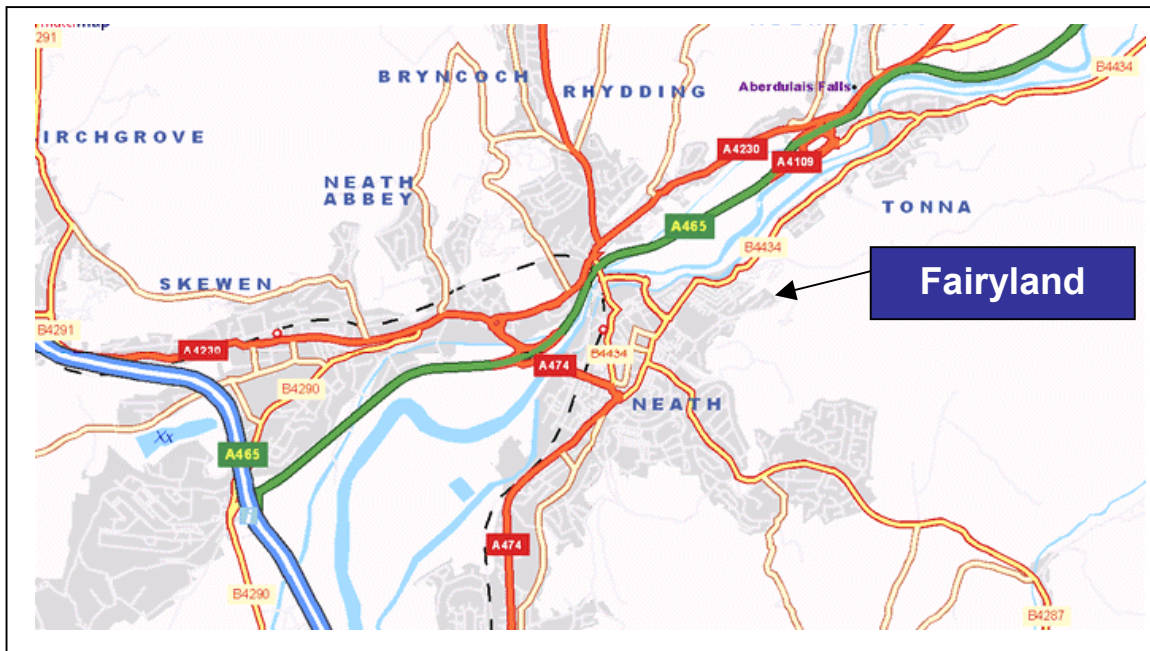
Fairyland Communities First Partnership

Representatives from these groups form the Fairyland Communities First Partnership. The Partnership model reflects the Welsh Assembly Government's recommended three-thirds principle where one third of the members represent the statutory sector, one third represent the voluntary/business sector and at least one third represent the community. The residents recognised the Partnership should include representatives who can influence, support and develop effective community planning. The Partnership is an energetic and enthusiastic combination of stakeholders who share the aim of reaching the goals and objectives set out in this Plan.

The characteristics of Fairyland are not typical of Neath North and it stands in isolation from the wider community. The Fairyland community has become marginalized over the years due to both its actual and perceived reputation. This reputation has been further exacerbated by negative press coverage. Local perception coupled with statistical evidence indicate and reinforce how socially excluded Fairyland has become. Fairyland residents were consulted and asked what they disliked about Fairyland a common response was:

“The way everybody is classed as trouble makers.”

Life on the estate is made difficult since no community facilities or organisations exist. Fairyland is close to the local swimming pool, recreational grounds and the Gnoll Country Park and half a mile from Neath town centre. Neath is where the community access education, health care, social and retail facilities.



There are definite characteristics that identify Fairyland as a Communities First area.

These include:

- ◆ Culture of benefit dependency
- ◆ High proportion of lone parents
- ◆ High levels of long-term sickness and disability
- ◆ Low levels of employment
- ◆ Drug and alcohol abuse
- ◆ Fear of personal safety
- ◆ Low educational attainment
- ◆ Poor estate design and maintenance

Gathering Baseline Information

The baseline information gathered has provided a strong foundation for identifying the issues that impact upon the Fairyland community. Real needs have been identified by gathering information from a variety of sources. To achieve this formal and informal methods have been used and have brought together a diverse range of information and statistics.

Listed below are the methods used to provide a comprehensive picture of life in Fairyland.

Community Profiling

A community profile gathers local information and provides an insight into the facilities, organisations and services that characterise the area. Profiling provides a foundation of knowledge and information that helps to define local needs taking into account the resources already available. The profile for Fairyland is limited due to absence of any facilities and the insular nature of the estate.

Community Consultation

Community involvement and consultation has been central to developing this Plan. The views, opinions and ideas of the wider community have been captured through various methods.

Household Survey:

Communities First carried out a household survey in March 2003. The aim of the survey was to develop a fuller understanding of the issues and problems facing Fairyland. There was 40% response rate to the survey.

Fairyland Fun Day:

To celebrate the opening of a new play park near to the estate Communities First organised a Fun Day in August 2003. Participants were asked to complete a short questionnaire.

Event In The Tent:

In March 2004 Communities First in association with Groundwork carried out consultation in a marquee on the estate. The aim of the event was to increase community participation. A facilitated workshop explored issues on and solutions to problems in Fairyland.

Youth Event:

The Communities First Youth Team held a consultation event in April 2004. The event was aimed at identifying the issues and needs of the young people of Fairyland.

Planning For Real:

In August 2004 a "Planning For Real" exercise was carried out in conjunction with a Fun Day.

Youth Summer Programme:

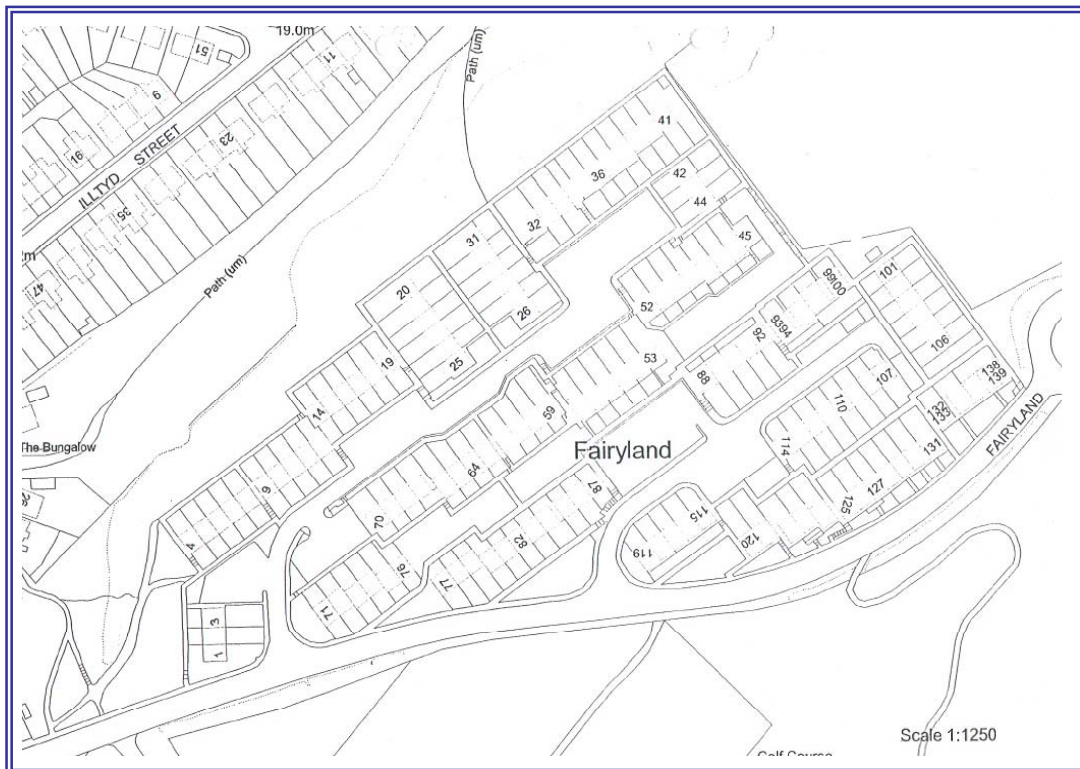
A week-long programme of events was organised by the Communities First Youth Team during August 2004. Consultation was carried out informally and team building skills developed.

Statistical & Demographic Data

Statistical and demographic data provides the Action Plan with existing information. This information has highlighted and helped to anticipate community needs. Fairyland is a sub ward of Neath North. To obtain statistical data at sub ward level it is necessary to breakdown information from the Census 2001 to output areas. Each electoral ward is divided into numerous output areas where approximately 125 households are represented. There are limitations to the amount of information available for Fairyland as relatively few statistics can be broken down to output level. The output area selected encompassing Fairyland gives an accurate reflection of the sub ward statistics since it only includes households from Fairyland.

The output reference for Fairyland is 00NZNE0002

Statistical information at sub ward level helps provide a factual foundation of evidence on which to develop a profile of Fairyland. It aims to provide information about the people living on the estate and their health and employment status. The map below reflects the self-contained layout of Fairyland. The estate comprises of 139 properties of which 123 are houses and 16 are flats.



According to the Census 2001:

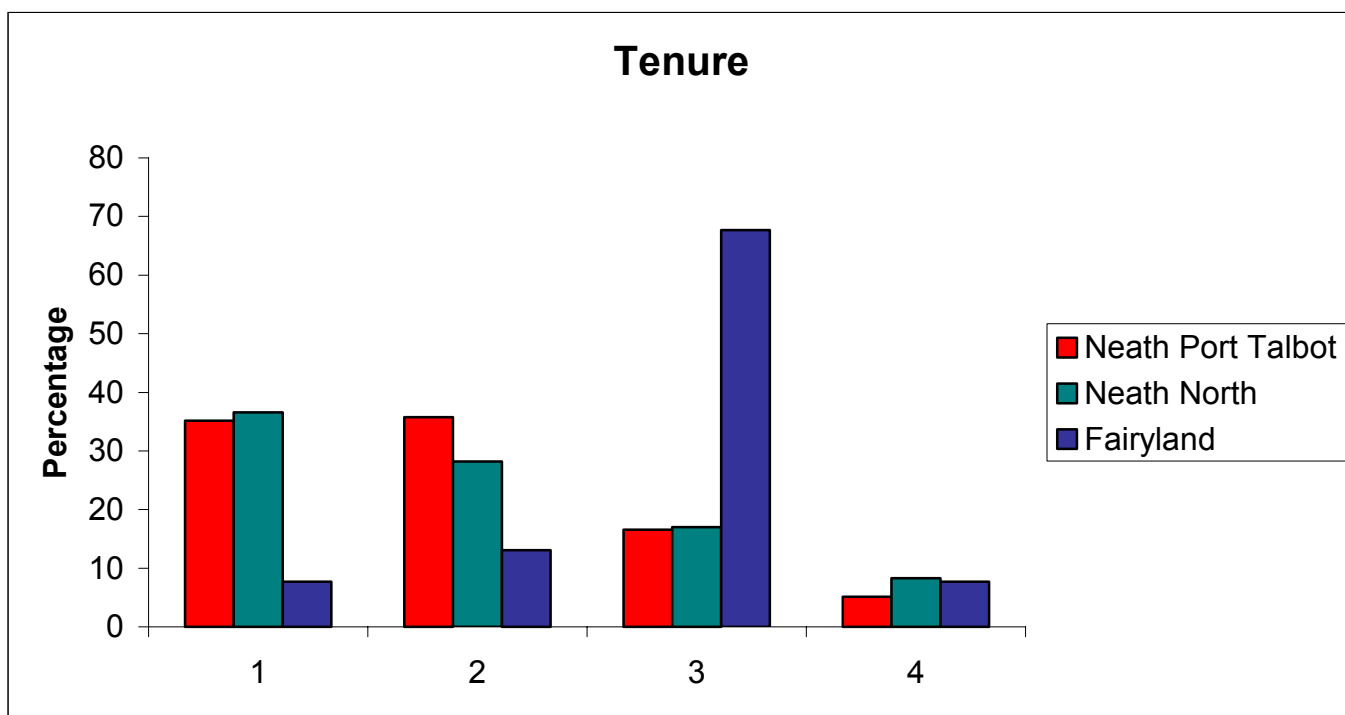
- ◆ 325 people live in Fairyland
- ◆ 46% of the people are male
- ◆ 54% of the people are female
- ◆ 90% of the people describe themselves as white British
- ◆ 90% of people were born in Wales
- ◆ 35% of the people stated that they follow no religion

Household Statistics

Tenure

More than three quarters of the population of Fairyland live in rented accommodation. This trend is also evident in the high proportion of people renting their homes from the Local Authority. In Fairyland 68% of people rent their homes from the Local Authority this is four times the Neath Port Talbot figure of 17%. In direct correlation to this almost 8% of Fairyland residents own their property outright compared to 35% of residents of Neath Port Talbot.

Number of households (percentage)



1	Owner occupied: Owns outright
2	Owner occupied: Owns with a mortgage or loan
3	Rented from Council (Local Authority)
4	Rented from private landlord or letting agency

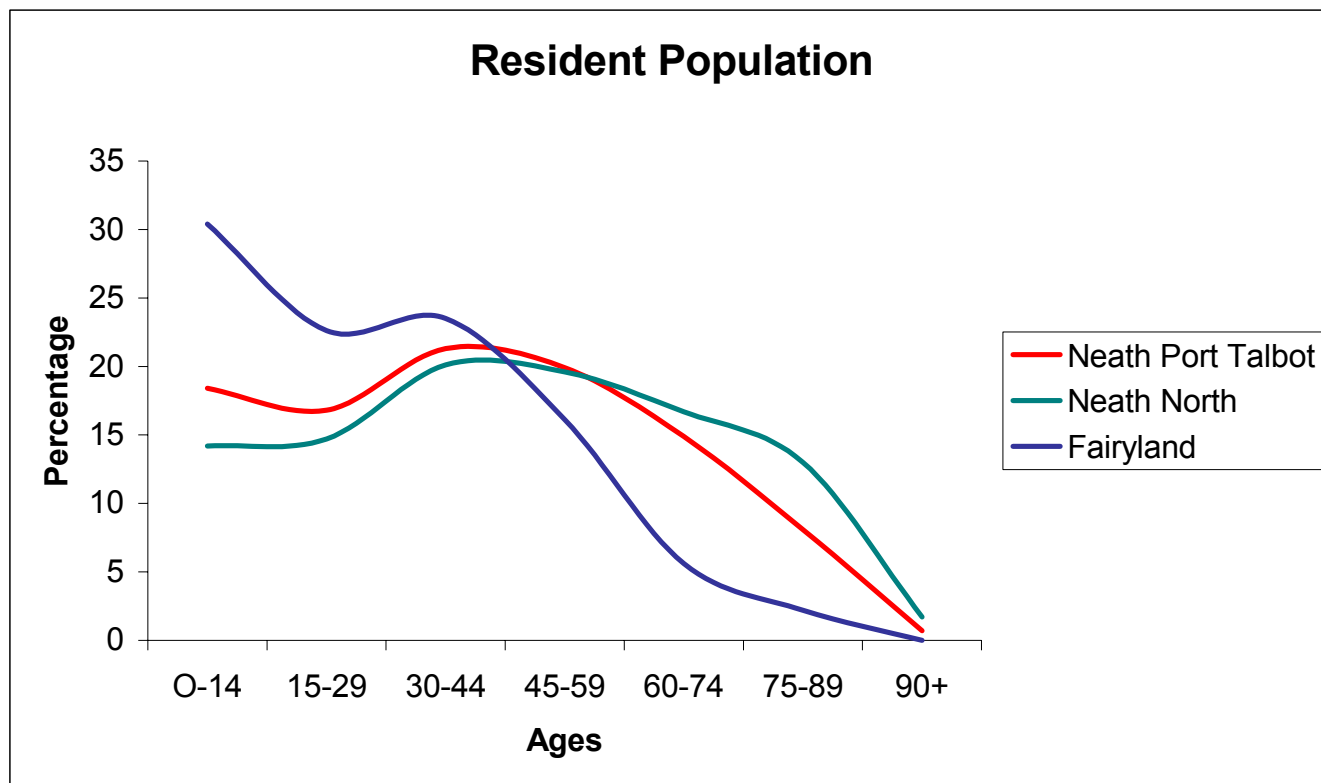
Source: 2001 Census, ONS

People Statistics

Resident Population and Age

The estate has a young population with 47% of the residents being under 25 years of age and with less than 5% of the population being over 65 years of age. This goes against the trend of Neath Port Talbot which has an ageing population for example Neath North has a population where 22% are over 65 years of age.

Resident Population (percentage)



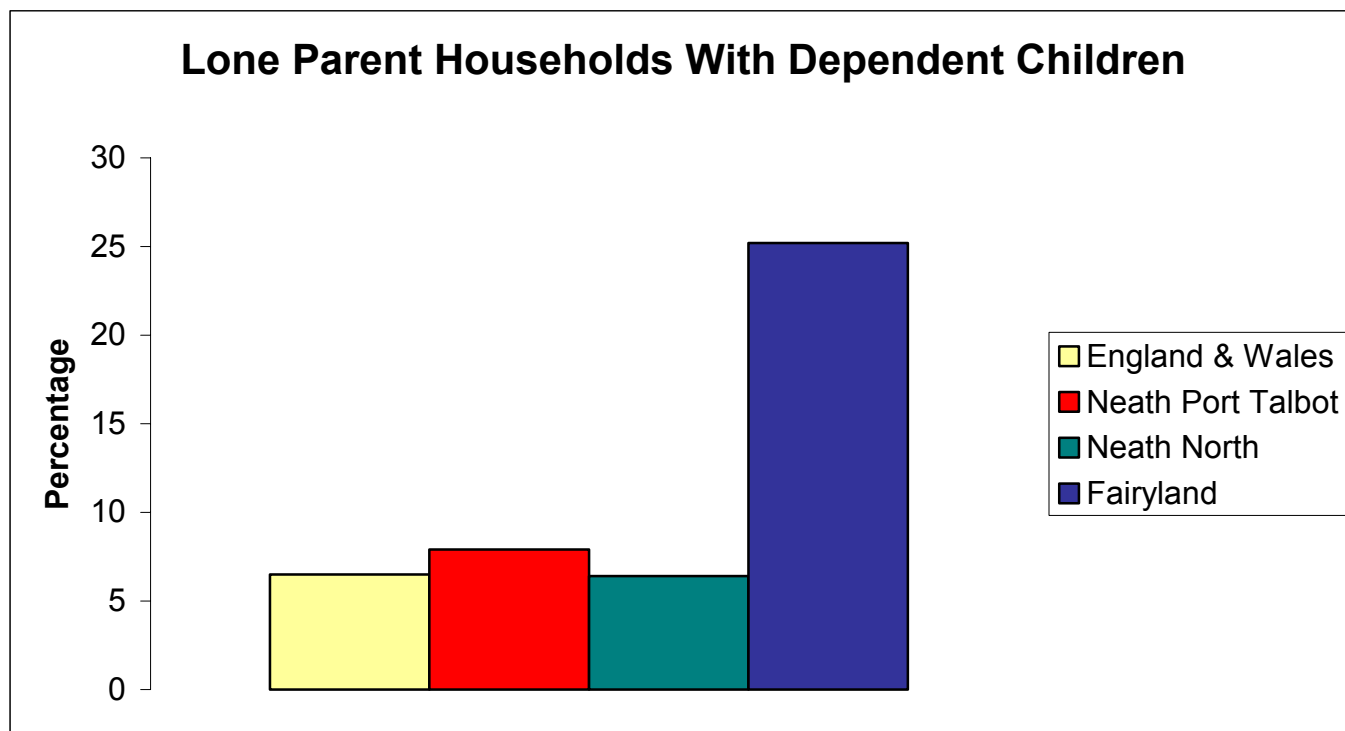
Source: 2001 Census, ONS

The community have consistently focused on the needs and requirements of the children and young people on the estate. The Communities First Partnership has identified those under 25 years of age as a priority group for the Action Plan. The employment, education, health and social needs of these young residents is seen as critical to achieving a sustainable future for Fairyland.

Lone Parent Families

Fairyland is home to almost four times the national average of lone parent families. In England and Wales 6.5% of households are occupied by a lone parent with dependent children as opposed to 25.2% of households in Fairyland.

Number of households (percentage)



England & Wales	Neath Port Talbot	Neath North	Fairyland
6.5%	7.9%	6.4%	25.2%

Source: 2001 Census, ONS

According to the 2001 Census there were 32 lone parent households in Fairyland 30 of which were female. Of these households 15% are in part-time employment, none are in full time employment.

Economic Activity

The stark reality of economic activity and prosperity in Fairyland is reflected in low levels of employment. In England and Wales more than 60% of those of working age are in employment in comparison to only 26% in Fairyland. Another major barrier that impedes employment opportunities is ill-health. Levels of sickness and disability in Neath Port Talbot are far higher than the England and Wales average. This is further magnified in Fairyland where more than a quarter of those of working age are long term sick or disabled. This figure is four and a half times the average for England and Wales. These figures are further compounded by caring responsibilities, unemployment and a benefit dependent culture.

Resident Population aged 16 to 74 (percentage)

	England & Wales	Neath Port Talbot	Neath North	Fairyland
Employed	60.6	50.6	48.4	25.7
Unemployed	3.4	3.9	3.7	7.9
Retired	13.6	15.6	16.8	4.7
Looking after home/family	6.5	6.8	6.5	19.6
Permanently Sick or disabled	5.5	13.6	14.3	25.7
Other economically inactive	3.1	4.2	4.6	10.2

Source: 2001 Census, ONS

A key indicator of economic prosperity is an average household income. This figure is not available at sub ward level. It could be anticipated that the figure for Fairyland would be below the average for Neath Port Talbot due to high levels of benefit uptake.

Gathering information is seen as an ongoing process critical as a measurement tool for evaluating and monitoring the Action Plan.

Part Three

Fairyland Vision

Building a profile of Fairyland has enabled the community to produce a Vision for the future. This Vision aims to build on the positive characteristics of the community, develop its features and address its needs. It also includes goals that will have physical, social and economic benefits for the community. This will in turn have a small but positive contribution to developing a better future for Neath Port Talbot.

This is the community vision for the future of Fairyland:

“That Fairyland is a homely, healthy, clean and safe place to live. The community building is the heart of the estate with many activities for both the young and old.”

Fairyland Residents' Vision
October 2004

Achieving this vision through Partnership working will require:

- ◆ Building a relationship with strategic partners and stakeholders that respects needs but is realistic about what is achievable.
- ◆ Effective and sensitive change management.
- ◆ Sustainable outcomes.

This Vision is based on the six themes identified by Communities First. These themes have been explored and needs identified in a detailed analysis of the Communities first Vision Framework.

Part Four

Fairyland Planning For The Future

The environment is important to the residents of Fairyland and is recognised as the estates best feature. There are opportunities to access parks and local countryside but participation and motivation to do so is low. Environmental projects to date have had a positive response from the community providing psychological, visual and physical impact.

The estate itself has many design issues which have a negative effect on the community however some of these can be addressed through the actions highlighted below. The priorities for action should help Fairyland residents to engage with and develop their own environment.

Priority environmental needs for Fairyland

- 1) Provide outdoor recreational space for children, young people and the wider community.**
- 2) Have a cleaner and safer estate.**
- 3) Ensure that the standard of housing and the immediate environment are well maintained.**
- 4) Improve household energy efficiency.**
- 5) Increase access to local environment through walking and cycling.**

Priority environmental needs for Fairyland

1) Provide outdoor recreational space for children, young people and the wider community.

Proposed Action	Priority Need
To provide outdoor recreational facilities on the estate. These could include a youth shelter, seating area, MUGA, natural “den” and/or sports equipment e.g. basketball hoop, football posts.	The young people of Fairyland need access to safe and appropriate outdoor facilities. They need space that encourages physical activity, social development and friendship.
To provide outdoor play areas for young children that incorporate seating and shelter for supervision and safety purposes.	The young children of Fairyland need access to safe outdoor facilities. The areas need to encourage play, independence and social development.
To provide a community allotment garden with disability access. The allotment should have the potential to deliver basic horticultural and vocational training as well as growing fresh produce.	Community access to a local facility that promotes the environment, physical activity and a healthy lifestyle. To provide local access to appropriate training opportunities that will develop capacity. To promote, protect the environment.

2) Have a cleaner and safer estate.

Proposed Action	Priority Need
Community led environmental “clean ups”. Raise awareness of and develop sustainable ways to deal with waste. Work with Local Authority and partners to have a waste collection service and waste management policy that meets local needs.	To have a cleaner estate with measure in place to reduce fly-tipping, dumping and burning of rubbish. To improve cleanliness of steps, pavements and car parks.

3) Ensure that the standard of housing and the immediate environment are well maintained.

Proposed Action	Priority Need
	That the houses and the estate are maintained to establish a secure and safe estate.
Increase and improve street lighting.	That street lighting is increased and of a quality suitable for the needs of the estate.
Improve boundaries, walls and gates (possibly through hedge planting scheme)	That there are better boundaries, walls and gates and that these are maintained.
Provide improved numbering for houses and signage for terraces.	That there is a more visible system in place for numbering individual houses, flats and terraces.

4) Improve household energy efficiency.

Proposed Action	Priority Need
To endorse the Warm Wales project and work with the Local Authority to ensure properties have effective energy efficient measures.	To provide consistent energy efficiency measures to reduce fuel poverty in Fairyland. To ensure there are effective methods of regulating heating and hot water systems.

5) Increase access to local environment through walking and cycling.

Proposed Action	Priority Need
To develop social enterprise through cycle hire and walking in conjunction with community facility. To develop and extend a network of cycle trails to link with other communities. E.g. Tonna and Pelenna.	To promote benefits of and increase participation in cycling and walking. To increase and improve the accessibility of the local environment.

Projects To Date

Estate Clean Ups

Estate clean ups are taking place on a regular basis. A week-long spring clean event removed 33 tonnes of rubbish from the estate. Fly-tipping and waste burning have been tackled and steadily reduced.

Community Allotments

Two allotments have been secured by Communities First. A small tool shed will be erected and work is about to begin on cultivating the site.

Verge Planting

Grass verges on the outside boundary of the estate were planted with shrubs and flowers. These now provide a visual welcome to both the estate and the approach to the Gnoll Country Park.

Mural

A grey graffitied car park wall has been transformed into a vibrant mural designed by local children and the area redesignated for play.

Garden Makeovers

Selected gardens were given a “makeover” which included plants, hedging and shrubs. These makeovers inspired other residents to follow suit.

Recreational Area

A “burning site” on the bottom of the estate has been turned into a community recreational area. The development includes a decked area, picnic tables and box planters.

To promote employment it is necessary to identify realistic and achievable ways to overcome the barriers faced by individuals and the community. Fairyland has low levels of employment, high levels of long-term sickness and disability and a high proportion of lone parents and young people. These factors all contribute to a community dependant on benefits with high levels of economic inactivity and comparatively low household incomes.

Economic Inactivity

(Excluding retired)

Resident Population aged 16 to 74 (percentage)

England & Wales	Neath Port Talbot	Fairyland
19.8%	28.2%	60.2%

Source: 2001 Census, ONS

The “benefit trap” offers a very real, regular and reliable income for some residents. Fairyland wants access to employment advice and guidance with emphasis placed on benefit advice. This will include in work benefit calculations, tax credit and housing benefit advice. Local employment is relatively easy to access from Fairyland since Neath town centre is only half a mile away. Transport issues arise when access is required for other areas such as Swansea and there is a need to develop the ethos of alternative methods of transport including car sharing and community transport schemes.

To promote employment and erode worklessness it is necessary to highlight work as a tool for achieving potential and creating increased prosperity for individuals and Fairyland as a community.

Priority employment needs for Fairyland

- 1) **Provide increased access to employment opportunities for the whole community with specialist support and focus on:**
 - ◆ Young people
 - ◆ Lone parents
 - ◆ Long term sickness and disability
- 2) **To create sustainable local employment and social enterprise.**
- 3) **Develop local childcare provision.**

Priority employment needs for Fairyland

1) Provide increased access to employment opportunities for the whole community with specialist support and focus on:

- ◆ Young people
- ◆ Lone parents
- ◆ Long term sickness and disability

Proposed Action	Priority Need
<p>Develop a co-ordinated partnership approach to link advice agencies and employment specialists directly with the community. Encourage outreach services and develop effective ways of communicating information this will include information boards and community facility. Involve partners with expertise such as Action Team For Jobs and those who specialise in specific areas e.g. Careers Wales, New Deal Lone Parent Advisors, and disability brokers such as Shaw Trust, Remploy Broker Cymru and Progress To Work.</p>	<p>To increase levels of employment in Fairyland and to provide specialist advice and support for those furthest from the job market.</p>

2) To create sustainable local employment and social enterprise.

Proposed Action	Priority Need
<p>To promote employment through social enterprise in response to local needs. These include community based childcare and a cycling initiative. Fairyland's long-term aim is to link these with a community venue that could accommodate crèche facilities and commercial cycle hire.</p>	<p>To develop localised opportunities for local people.</p>

3) Develop local childcare provision.

Proposed Action	Priority Need
To train local people to become registered childminders and help ensure their homes meet required standards for registration. To provide employment advice and support for the potential childminders and for those parents who want to find work.	To have access to registered childminders and childcare on the estate to enable parents to undertake training, employment and social activities.

Projects To Date

Action Team For Jobs

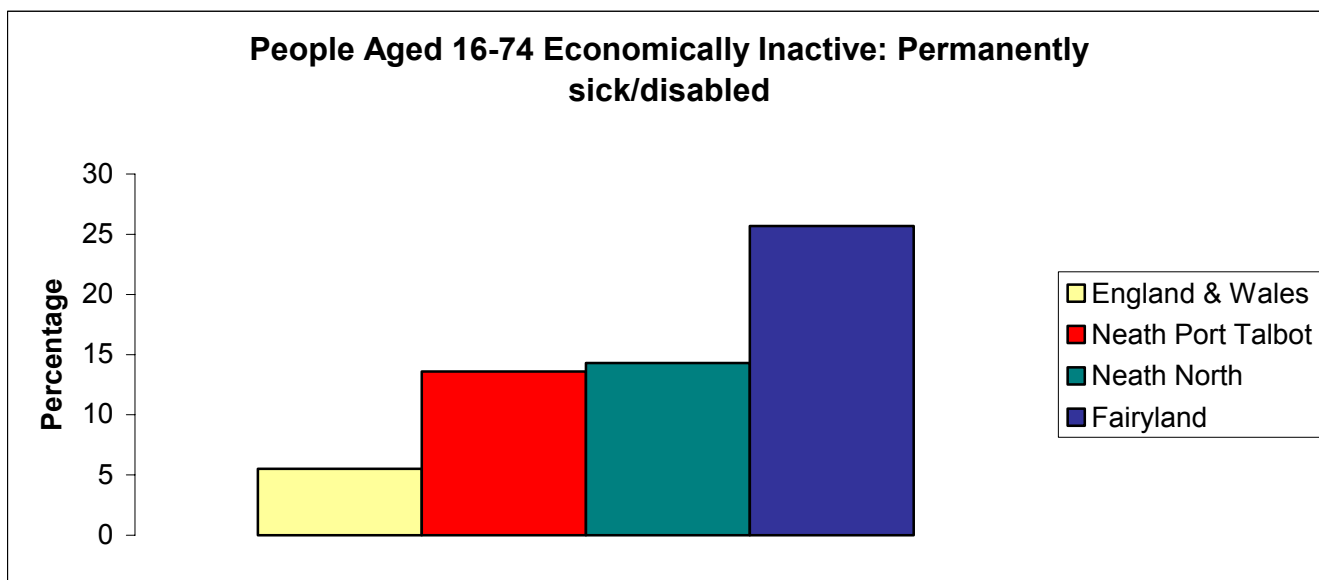
Action Team For Jobs have bent their services and have extended the wards they cover to include Fairyland. They have been actively engaging with residents since Spring 2004. Lack of community facilities and high demand for the Action Team For Jobs mobile unit across Neath Port Talbot and Swansea has meant that the mobile outreach service is only available for Fairyland at short notice on an ad hoc basis. To raise their profile Action Team For Jobs have sponsored and attended community events, leafleted the estate and advertised their services in the Communities First Newsletter. The organisation has representation on the Partnership and is providing information on benefit advice in relation to voluntary work, training and in work benefit calculations.

Basic Food Hygiene Course

A joint training programme with Communities First in Briton Ferry West offered a free week long fast track course for a food handling qualification. The course was organised in conjunction with Action Team For Jobs, Neath port Talbot College and the New Learning Network and participants were offered financial support for childcare and transport costs.

The future well being of Fairyland will rely on tackling the causes of ill health as well as managing the health problems that already exist on the estate. Fairyland’s demographic profile does not reflect that of Neath Port Talbot. Fairyland has a young population and while it has high levels of long term sickness and disability this cannot be associated with an ageing population.

Resident Population aged 16 to 74 (percentage)



England & Wales	Neath Port Talbot	Neath North	Fairyland
5.5%	13.6%	14.3%	25.7%

Source: 2001 Census, ONS

Statistical health data for Fairyland is limited and relies on the profile of Neath Port Talbot. Consultation and gathering baseline information has identified the main areas for focus in order to improve health and well being in Fairyland. The aims will be to promote a healthy community with emphasis on children and young people, families and drug and alcohol related issues. Fairyland’s young population has the long term potential to reduce and prevent the major determinants of ill health in Neath Port Talbot such as coronary heart and disease, cancers and respiratory diseases. This can be achieved by increasing exercise, reducing smoking and improving diets. Unfortunately a young population can also be at risk from a high incidence of drug abuse, high levels of sexually transmitted infections and teenage pregnancies. Fairyland consultation has consistently identified drug and alcohol abuse as factors that have serious adverse consequences for the estate. The extent of the abuse is also reflected in consultation with the young people. Many of these issues mentioned impact on family life and can result in complex needs. Children can suffer from adverse exposure to domestic violence, drug and alcohol abuse and mental health issues.

Fairyland has many lone parent families that have the added pressures of low income and possibly isolation. It is families that will need support to understand the importance of their own health as well as the health and well being of their children. Older residents also need support to enjoy independent living and awareness of appropriate diet, exercise and lifestyle.

Priority health needs for Fairyland

- 1) To promote a healthy community and encourage healthier lifestyles. To reduce causes of ill health through improved nutrition and increased exercise.**
- 2) To provide Fairyland with local information on healthy living and the initiatives and organisations that can support this.**
- 3) To provide parents, children and young people with information and support to understand the importance and benefits of a healthy lifestyle.**
- 4) To reduce drug and alcohol abuse on the estate.**

“Wales needs to maximise the synergy between sport,
active recreation and the natural environment.”

Sport & Active Recreation In Wales Strategy & Consultation 2003

1) To promote a healthy community and encourage healthier lifestyles. To reduce causes of ill health through improved nutrition and increased exercise.

Proposed Action	Priority Need
<p>Develop community cycling initiative and walking parties to encourage community participation. Exploit local amenities including the Gnoll Country Park, Afan Argoed and local canal network. To encourage cycling and walking as leisure activities as well as alternative methods of transport. Provide recreational areas that encourage outdoor play for all ages.</p>	<p>To raise awareness of rich local environment and potential for healthy living and exercise at low or no cost.</p>
<p>Develop community initiatives that promote the benefits of fresh produce and healthy food preparation. Cultivate the local community allotment and encourage the growth of fresh fruit and vegetables. To encourage involvement from all sections of the community.</p>	<p>To raise awareness of the importance of diet on a healthy lifestyle</p>

2) To provide Fairyland with local information on healthy living and the initiatives and organisations that can support this.

Proposed Action	Priority Need
<p>To produce a newsletter that provides information and advice on health and well being. It will promote and raise awareness of national and local projects and initiatives aimed at tackling ill health. For example: The Welsh Assembly Government's "Climb Higher Campaign" and Neath Port Talbot's "PACE" Project. The newsletter will promote issues that directly affect the residents of Fairyland. It will raise awareness of primary health care services that are available at no cost for children e.g. eye tests, dental treatment, and prescriptions. It will also aim to promote local services and voluntary organisations.</p>	<p>To encourage Fairyland residents to become more responsible for determining their own health and well being by providing the community with relevant health information.</p>

3) To provide parents, children and young people with information and support to understand the importance and benefits of a healthy lifestyle.

Proposed Action	Priority Need
<p>To develop community based parenting workshops to consider:</p> <ul style="list-style-type: none"> • Emotional and physical well being. • Play and developmental activities. • Age related nutrition advice. • Budgeting. 	<p>To provide parents and families with information, advice and support on healthy lifestyles.</p>
<p>To work in partnership with Communities First Youth Team and other relevant agencies to address issues that include:</p> <ul style="list-style-type: none"> • Sexual health and relationship advice. • Smoking. • Physical well being, exercise and nutrition. • Drug, alcohol and substance misuse. • Emotional well being. • Confidence and motivation building. 	<p>To provide young people with information and advice relevant to their needs.</p>

4) To reduce drug and alcohol abuse on the estate.

Proposed Action	Priority Need
<p>To create community based links with local drug and specialist support agencies in order to</p> <ul style="list-style-type: none"> • To promote harm reduction. • To provide support for abstinence. • To provide support for families affected by drug alcohol and associated issues. 	<p>To reduce drug and alcohol abuse. To offer appropriate support that helps change behaviour to encourage more positive life styles.</p>

Projects To Date

Keep Fit In Fairyland

A women's course of self-defence and keep fit was run at Neath YMCA. Free transport and refreshments were provided. The projects was delivered in conjunction with the Communities First Domestic Violence Partnership and funded by Victim Support.

Mystery Trip

A mystery trip to the local forest was organised for the children and young people of Fairyland. The purpose of the outing was to carry out photographic consultation to be incorporated into a mural design for the estate. Children were given disposable cameras to collect photographs of their local surroundings as they walked through the countryside.

Local Information Leaflet

A leaflet was produced by Communities First and delivered to every household in Fairyland. The leaflet promoted local holiday activities and events that included swimming, play and outdoor recreation for little or no cost.

Outdoor Play

Outdoor play has been encouraged by developing a recreational area at the bottom of the estate and redesignating a car park as a play area. This area will include a mural with low level hand and foot holds.

Summer Youth Programme

Young people from three Communities First areas took part in a week long programme of activities organised by the Communities First Youth Team. Activities included canoeing, river crossing, swimming and police fitness training.

Fairyland has a strong and clear vision of how it can develop as a confident community. Committed community participation underpins the whole of the Communities First process and will ultimately be responsible for its success. The challenge is exciting, ambitious and requires dedicated, realistic and robust support. The Communities First Partnership has opened up wide ranging channels of communication with a broad range of agencies and organisations. The Forward 4 Fairyland tenants' group now represents the estate on the Neath Port Talbot Residents' Forum.

A community venue is seen as critical if community involvement is to develop and extend. Fairyland has a diverse and sometimes vulnerable community that needs an informal and relaxed local base. This would also enable the harder to reach members of the community to participate and have a direct input into the future of their community. A facility on the estate would help overcome barriers that impede integration such as lack of transport and childcare facilities. It would encourage the development of a social support structure and nurture a sense of community identity. It will be the "heart" of the estate from where all the needs identified across the six themes of the Communities First Vision Framework could begin to be addressed.

Fairyland is steadily increasing its confidence and capacity to deliver a better future for Fairyland.

Priority community needs for Fairyland

- 1) **A community facility where, "the community building is in the heart of the estate with many activities for young and old."**
- 2) **To develop a forum of young people.**

"Fairyland is a peaceful place to live, neighbours are great and always ready to help."

Event In the Tent 2004

Priority community needs for Fairyland

1) A community facility where, “the community building is in the heart of the estate with many activities for young and old.”

Proposed Action	Priority Need
<p>To provide a facility where the community can come together to socialise, share common interests to build skills as individuals and as a community. The facility should have the potential to support:</p> <ul style="list-style-type: none"> • A community café (supported by local allotments) • A community cycling and walking initiative. • A community crèche. <p>The facility should provide:</p> <ul style="list-style-type: none"> • A meeting space. • A place for exchange of information, advice and guidance. 	<p>Fairyland has no community facility of any kind. There is a need for a community venue that will serve as a meeting place for all residents. This will provide opportunities to socialise, learn and work to develop the community. It needs to be accessible for people who might experience isolation such as older people and provide a much-needed place for young people to “hang out.”</p>

2) To develop a forum of young people.

Proposed Action	Priority Need
<ul style="list-style-type: none"> • To continue to work with the Communities First Youth Team and other associated partners. • To encourage interaction with communities and agencies outside of Fairyland through trips and residential. • Develop ways to promote and support healthy living through exercise and nutrition initiatives. • Provide learning and employment opportunities. 	<p>To develop the confidence and skills of young people in order that they can maximise their full potential and actively contribute to community development.</p>

“I enjoyed working as a team, getting wet and dirty, crossing the river, kayaking and having a laugh with the girls in the night.”

Youth Summer Programme 2004

Projects To Date

Forward 4 Fairyland

A residents and tenants' group is being formed. The association wants to develop interest groups for young people and older residents, and is keen to support a community facility. Members of Forward 4 Fairyland represent their community on the Local Authority Residents' Forum.

Consultation Events

Several consultation events have taken place in Fairyland. These events have encouraged participation from the wider community since consultation has been central to developing this Plan.

Environmental Clean Ups

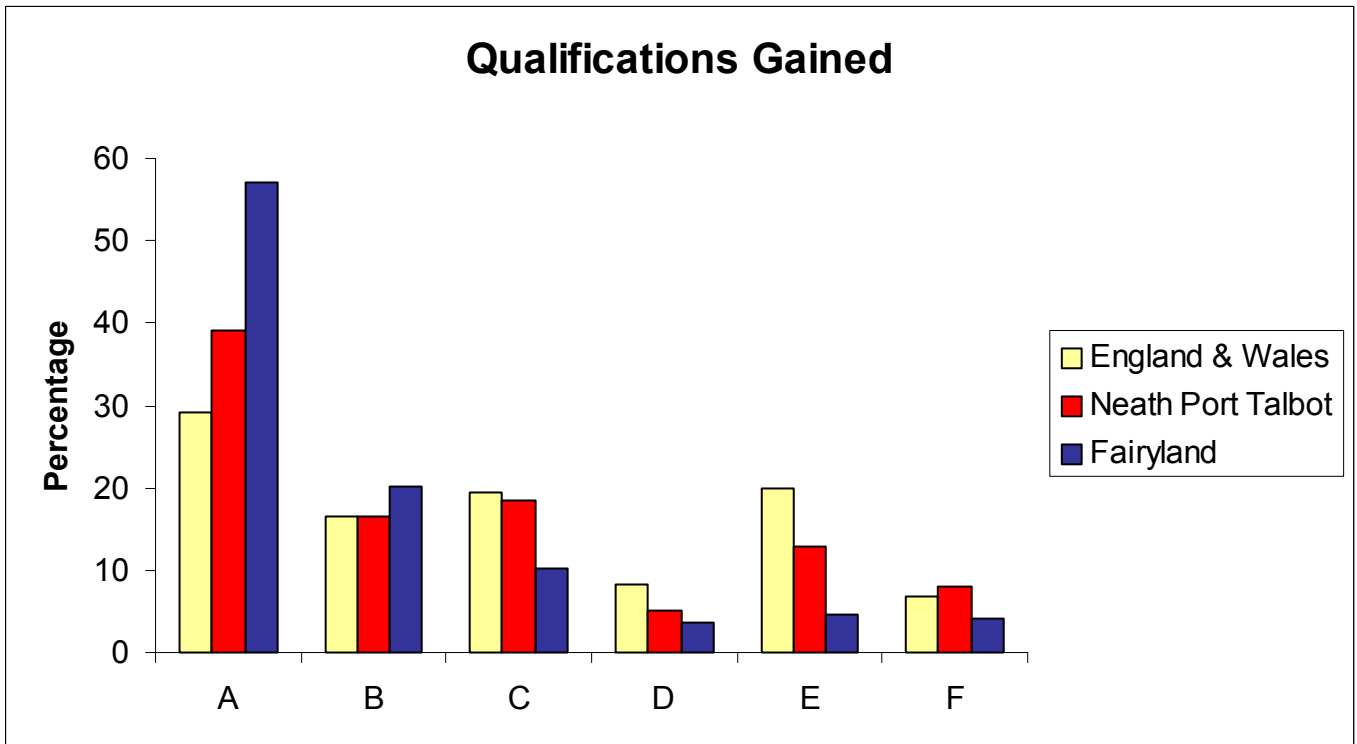
Community led estate clean ups are taking place on a regular basis. Residents supported a week-long clean up and haven tackled local fly tipping issues through volunteer work with Keep Wales Tidy.

Fairyland Fun Days

The residents organised the second annual Fairyland Fun Day to coincide with the opening of a recreational area at the bottom of the estate. There was a fantastic turnout of residents and it is hoped this summer event will continue.

Education and training develops and builds the capacity of individuals and consequently provides a positive contribution to community regeneration. Fairyland is not yet identifying education and training as high priorities but they will be central to the future of Fairyland. The community will require sufficient capacity to develop and sustain local enterprises and initiatives through encouraging individuals to reach their potential.

Resident Population aged 16 to 74 (percentage)



	Highest Qualification Attained	Explanation
A	No qualifications	
B	Level 1	1+ 'O' level passes; 1+ CSE/GCSE any grades; NVQ level 1; Foundation GNVQ.
C	Level 2	5+ 'O' level passes; 5+ CSEs (grade 1's); 5+ GCSEs (grades A-C); School Certificate; 1+ 'A' levels/'AS' levels; NVQ level 2; Intermediate GNVQ.
D	Level 3	2+ 'A' levels; 4+ AS levels; Higher School Certificate; NVQ level 3; Advanced GNVQ.
E	Level 4/5	First degree; Higher degree; NVQ levels 4 and 5; HNC; HND; Qualified Teacher Status; Qualified Medical Doctor; Qualified Dentist; Qualified Nurse, Midwife; Health Visitor.
F	Level unknown	

Source: 2001 Census, ONS

Fairyland is working towards breaking down the barriers to learning and aspiring to community based learning. Promoting local opportunities and encouraging inclusion will provide equal opportunity for access to education regardless of ability. It is hoped that sensitive and appropriate skill building will act as a conduit to mainstream and formal qualifications. It is difficult to access statistics relative to education and training at sub ward level so data is limited. The need to develop basic skills cannot be quantified, but it is anticipated that for many this will be a prerequisite to learning.

The roll of the voluntary sector and volunteering will also need to be highlighted as a tool for capacity building. Voluntary work often provides a stepping-stone to training and employment opportunities.

Employment opportunities can also be improved by:

- ◆ Delivering vocation training to meet the needs of the local job market.
- ◆ Encouraging those in employment to upskill or extend their skill base.

As a consequence of the above Fairyland would expect to see an increase in average household income.

Priority educational and training needs for Fairyland

- 1) To consult with young people to understand their learning needs.**
- 2) To provide family workshops to promote parenting skills.**
- 3) To develop local childcare provision.**
- 4) To provide access to local education and training, centred around the community allotments.**

Priority educational and training needs for Fairyland

1) To consult with young people to understand their learning needs.

Proposed Action	Priority Need
<ul style="list-style-type: none"> • To deliver community/peer led consultation to young people to identify learning needs. • To draw up an Action Plan for learning needs. • To provide childcare locally and as an opportunity for children to engage in positive play. 	<p>To consult with young people to understand their learning needs as individuals and as parents.</p>

N.B. To address this need an expression of interest has been submitted to ELWa to be become a pilot project for a Learning Community Account.

2) To provide family workshops to promote parenting skills.

Proposed Action	Priority Need
<p>To deliver workshops that provide support for families through:</p> <ul style="list-style-type: none"> • Needs identified by the families. • Nutritional and lifestyle needs. • Social interaction and play. • Family literacy, so young children are prepared for learning and older children can receive support when learning. • Budgetary and financial literacy. 	<p>To support parents and families in Fairyland.</p>

3) To develop local childcare provision.

Please See Jobs and Business

Page 37

Childcare provision can (subject to eligibility) often be paid for by educational/training providers. The difficulty for Fairyland residents is that there is a total lack of availability and access to a local resource. This couples with associated transport issues alienated parents from taking up educational and training opportunities.

4) To provide access to local education and training, centred around the community allotments.

Proposed Action	Priority Need
To deliver “informal” training and accreditation through “allotment curriculum” that incorporates: <ul style="list-style-type: none">• Confidence skills.• Social skills.• Basic skills.• Horticultural skills.	To promote the value of education and training. To reduce disengagement and underachievement through an informal and local learning environment, that will have the ability to integrate all ages of the community.

Projects To Date

Basic Food Hygiene Course

A joint training programme with Communities First in Briton Ferry West offered a free week long fast track course for a food handling qualification. The course was organised in conjunction with Action Team For Jobs, Neath port Talbot College and the New Learning Network and participants were offered financial support for childcare and transport costs.

Youth Summer Programme

The week of summer activities, delivered by the Communities First Youth Team, provided a varied and stimulating programme. The project evaluation highlighted the young people had a positive attitude to learning and team working. The week developed social skills, confidence and allowed young people positive interaction with the police and fire service.

Foundation In Youth Work

Neath Port Talbot Youth Service is offering free training at Neath College to the residents of Fairyland to qualify at foundation level for youth work. Two residents have expressed an interest in undertaking this course.

Fairyland Mural

Local children responded to the challenge of how to improve Fairyland by asking for a mural. The children and young people were instrumental in the design, layout and painting of the vibrant mural. The experience built confidence and encouraged local knowledge and introduced creative art.

Fairyland Newsletter

The Fairyland newsletter has been used to raise awareness of local education and training facilities. It advertised the New Learning Network’s Adult Learners’ Week and the range of provision available at Neath YMCA.

Community Training

Neath Port Talbot Council For Voluntary Services have provided a supported route to learning by delivering a range of facilitated training to residents. They have adopted a flexible approach to both course content and venue. Training has been undertaken at local venues, marquees and outdoors. Topics covered include effective meetings and minute taking.

Fairyland is a small community with a big reputation. Residents are challenging this and working to resolve local problems that will lead to a safer estate. Negative publicity stigmatises individuals and Fairyland as a whole, with the behaviour of a small number of people exerting a disproportionate image of the whole community. Efforts are being made to present a positive profile of the estate by encouraging local press coverage of events and projects.

Developing a positive relationship with the police is important to Fairyland and progress towards this is being made. The police support the Partnership and have been visible and involved in local events. The community want to see a swift and appropriate response to crime whilst respecting the need for the police to balance enforcement with prevention.

A community facility and the involvement of young people in the development of Fairyland are central to the residents' vision of a better future. There are many agencies working to include young people in stimulating activities that will encourage and enable them to develop a positive sense of individual and community identity. Developing effective and far-reaching engagement with young people is challenging. The police and fire service committed time and resource during the Youth Summer Programme with the aim of nurturing a sense of mutual respect.

Vulnerable Fairyland residents are often those most likely to be affected by harassment and anti social behaviour. Sensitive support for those with specific needs such as domestic violence, mental health and disability is essential. Fairyland wants to set in place measures to reduce fear and intimidation that can often lead to isolation. Reduction measures could include:

- ◆ Effective home security.
- ◆ Visible community policing.
- ◆ “Supporting People” – who are vulnerable with housing related support.
- ◆ Work in partnership with the Estate Rangers to ensure effective reporting of anti social behaviour.
- ◆ Understanding of compliance with Local Authority tenancy agreements.

More than 50% of Fairyland residents avoid going out after dark.

Household Survey 2003

These measures and a committed partnership approach should facilitate the reduction of real and perceived levels of crime in Fairyland making it a safer and more confident community.

Priority community safety needs for Fairyland

1) To reduce drug and alcohol abuse and drug related crime.

2) Reduce levels of youth annoyance in Fairyland.

3) Promote home security and safety.

Priority community safety needs for Fairyland

1) To reduce drug and alcohol abuse and drug related crime.

Proposed Action	Priority Need
<p>To create community based links with local drug and specialist support agencies in order to</p> <ul style="list-style-type: none"> • To promote harm reduction. • To provide support for abstinence. <p>To provide support for families affected by drug alcohol and associated issues.</p>	<p>To reduce drug and alcohol abuse in Fairyland. To offer appropriate support that helps change behaviour to encourage more positive lifestyles.</p>
<p>To work in partnership with youth providers and drug and alcohol agencies. To provide young people with relevant information so that they can make informed lifestyle choices and access support services when appropriate.</p>	<p>To direct young people away from a culture of drug and alcohol abuse and reduce Peer pressure on young people to partake in substance misuse.</p>
<p>To improve the links between the Fairyland community and police by developing open channels of communication. This will aid sensitive intelligence led policing of the estate and reduce fear of crime.</p>	<p>To reduce the availability of drugs on the estate.</p>

2) Reduce levels of youth annoyance in Fairyland.

Proposed Action	Priority Need
To increase the opportunities available	To reduce incidences of anti social

to young people both on and off the estate. To work with youth providers to offer diversionary activities and initiatives. To encourage young people to participate in community regeneration through involvement in local projects.	behaviour and youth related crime.
--	------------------------------------

3) Promote home security and safety.

Proposed Action	Priority Need
<p>Work in partnership with the Local Authority and crime prevention agencies to raise awareness of:</p> <ul style="list-style-type: none"> • Home security measures, e.g Care and Repair’s service of upgrading of security for vulnerable people. • Methods for reporting anti social behaviour. • Supplementary support available from voluntary organisations and groups. e.g. Women’s Aid. 	To reduce fear of crime by promoting crime prevention initiatives.

Projects To Date

Partnership Working

Project work has encouraged multi agency involvement. The environmental clean ups have involved the community, the Fire service, the Youth Offending Team, the Estate Rangers, the Local Authority and Keep Wales Tidy.

Awareness Raising

- ◆ Every household in Fairyland has received a crime and disorder information leaflet.
- ◆ The Fairyland Housing Officer and the Estate Rangers have attended Partnership meetings and community events to explain their roles within the Local Authority and promote their services.
- ◆ The Communities First newsletter has been used as a medium to raise awareness of what anti social behaviour is and how best to report it.

The Way Forward

This draft Action Plan is a result of work carried out by the Communities First Partnership and the Fairyland residents. The draft needs to be endorsed by the wider community and relevant partners before the final Plan can be submitted to the Welsh Assembly Government. All needs and priorities have evolved from detailed community consultation and evidence gathering that will be sourced in the appendix of the final draft.

Comments

If you require any further information or can contribute any comments, suggestions, advice or statistical information to improve this draft you can contact the Communities First Team.

Mari Shufflebotham

Co-ordinator

m.shufflebotham@npt.gov.uk

Tel: 07790611818

Elizabeth Randall

Trainee Development Officer

e.randall@npt.gov.uk

Tel: 07790611821

Comments can be sent to:

**Communities First Sub Ward Team
Cwmafan Community Centre
Depot Road
Cwmafan
Port Talbot
SA12 9DF**

Communities First in Fairyland wish to thank all partners,
organisations and agencies who are
Supporting the Communities First process in Fairyland.